



Drawstring Project Bag

Materials:

Lining/contrast fabric- $\frac{3}{8}$ yard $\frac{3}{8}$ yard

Outside fabric - $\frac{3}{8}$ yard

Ties - $\frac{1}{8}$ yard fabric or 2 yards ribbon

Finished size: Approximately 12" x 9"

Outside Fabric: Cut (2) pieces 11"x 12½"

Lining Fabric: Cut (2) piece 18½" x 12½"

Drawstrings :

Ribbon or Cording - Cut (2) 34" pieces

Optional Fabric Ties - Cut (2) 2" x 34" strips

1. Sew front outside to lining, right sides together on 12½" side. [Diagram 1] Repeat for back. Press seams open.
2. Match front and back right sides together. Mark 1" opening on each side for drawstrings. Measure 1¼" and 2¼" from seam. [Diagram 2] Pin sides and stitch ¼" seam allowance leaving opening for drawstrings not sewn. Press seams open.
3. Sew lining bottom of bag leaving a 3" opening to turn right side out. Sew outside bag bottom together. Press seams open. [Diagram 2]
4. Create flat bottom. Start with bag lining and line up the bottom and side seams. Mark a line 1¼" from point. Stitch on that line backstitching at the beginning and end. Repeat for remaining corners. [Diagram 3] Trim off triangle leaving ¼" seam allowance. [Diagram 4]
5. Turn bag right sides out, pulling it through the opening in the lining. Push out the corners. Press the lining opening under ¼" Stitch the opening closed with a small seam allowance by machine or by hand.
6. Push the lining inside of the bag. The fold line creates the contrast at the top of the bag. Press the fold line at the top of the bag. [Diagram 5]
7. Mark a stitching line for the drawstring casing. Measure 1¼" and 2¼" up from the seam line. [Diagram 5] Stitch all the way around the bag on the casing lines.
8. Ties - Fold short edges ½" to wrong side. [Diagram 6] Fold piece in half lengthwise, wrong sides together. [Diagram 7] Unfold and press one edge to center fold line. [Diagram 8] Repeat for second edge. [Diagram 9] Fold in half and press. Edge stitch on both sides of the tie. [Diagram 10]. Repeat for the second tie.
9. Use a safety pin to pull the ties through one side and out the other side of the casing. Tie the ends together.

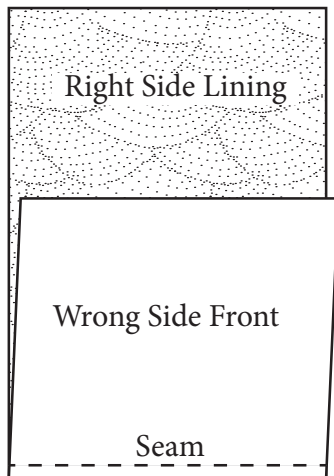


Diagram 1

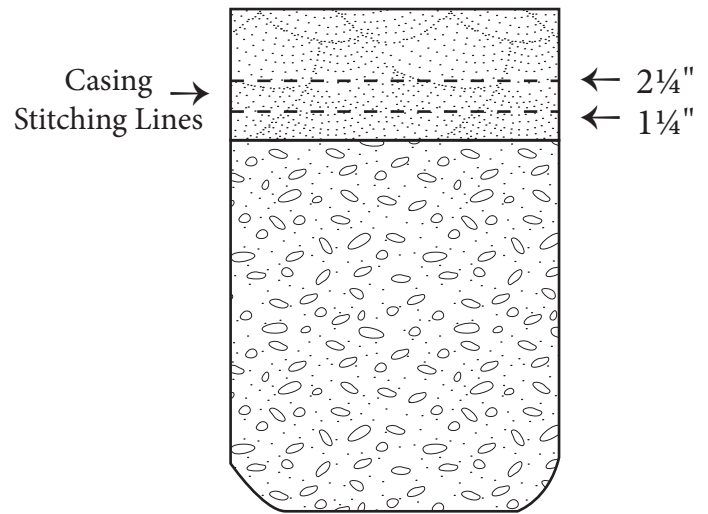


Diagram 5

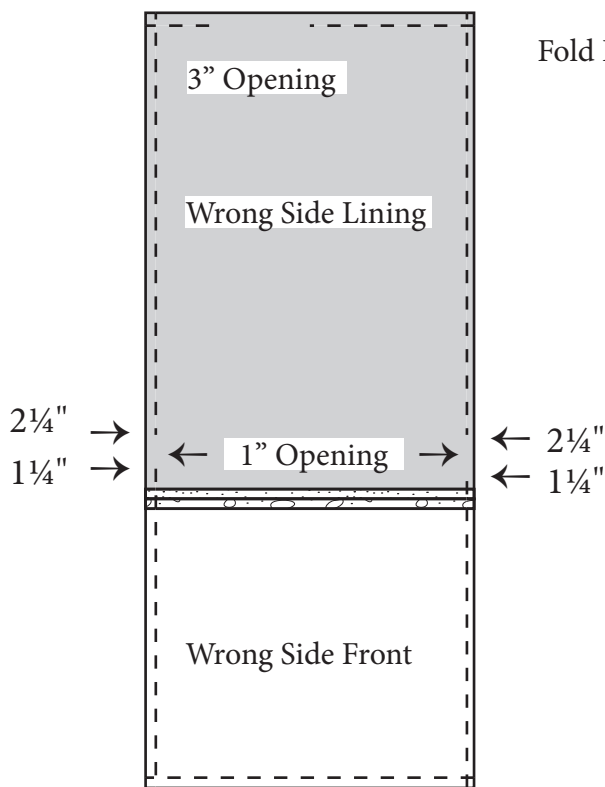


Diagram 2



Diagram 6



Diagram 7

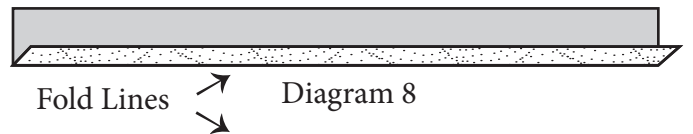


Diagram 8

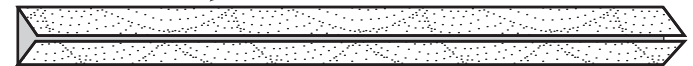


Diagram 9



Diagram 10

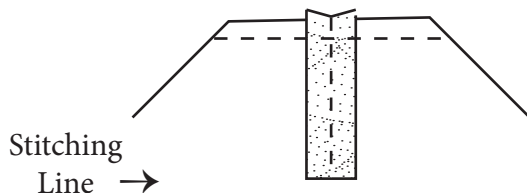


Diagram 3

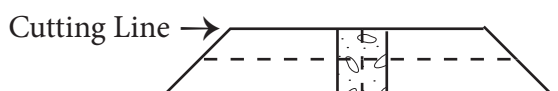


Diagram 4

